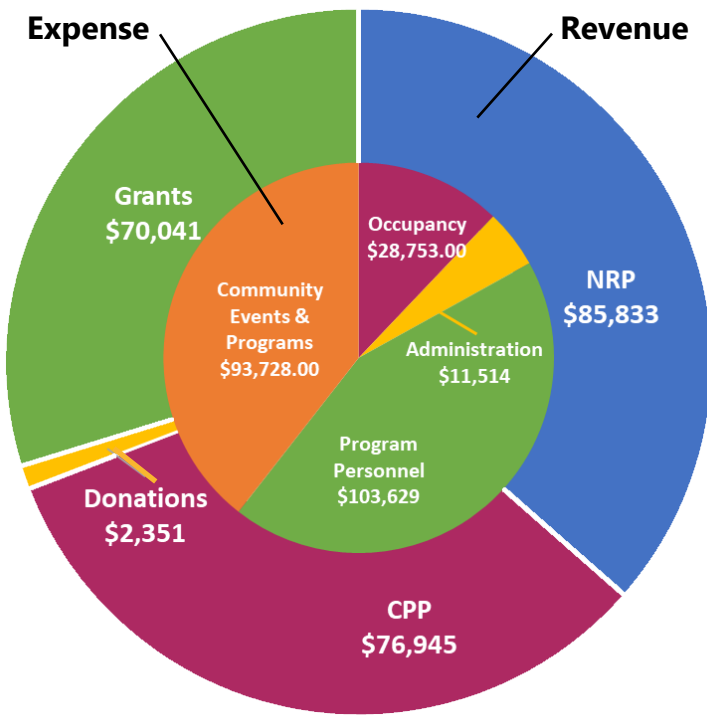




Standish-Ericsson Neighborhood Association

2019 Annual Report

2019 Annual Operating Budget



The mission of SENA is to support the vitality of our neighborhoods by building on our community's strengths and advocating for our residents and community partners.

5 Community Grants

Totaling **\$6,394** given to community partners serving our community.

Courageous heARTS RestART Room providing support to stressed out students and educators.

Northrop PTA and Northrop Families for Equity & Diversity Promoting awareness and dialogue about challenges and opportunities in the school community

Sibley Park Corn Feed Underwriting support

Roosevelt High School Urban Farm Expansion To develop an additional 7,000 sf of organic garden space

South Minneapolis Rotary Club Where the Brahmmaputra meets the Mississippi... A confluence of cultures

\$112,370

SENA supported low and moderate income home ownership through low-interest revolving and zero interest deferred home improvement loans.

5 Events



South Minneapolis Green Fair



18th Annual SENA-Corcoran Neighborhoods Garage Sale

YARD SALE

9 Programs & Projects

- Organics Recycling Starter Kits
- New Neighbor Welcome Packs
- Lead Hazard Reduction Grants
- Roosevelt High School "Growing Kids and Community" Urban Farm Expansion
- Folwell Performing Arts "A View through Words" Mosaic Bench project
- Roosevelt High School "Sculptural Welding" partnership with Chicago Fire Arts Center
- Facade Improvement Matching Grants
- West of the Rail Business Association
- Women Venture Entrepreneur Training

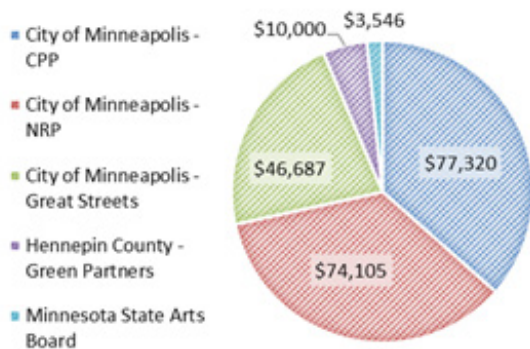
4700+ Households reached with news and information through our on-line newsletter, social media, direct mailing, and community events.

4 Local Artists & 4 Groups with neighborhood roots took advantage of free use of the SENA offices for exposure, meetings & gatherings in 2019.

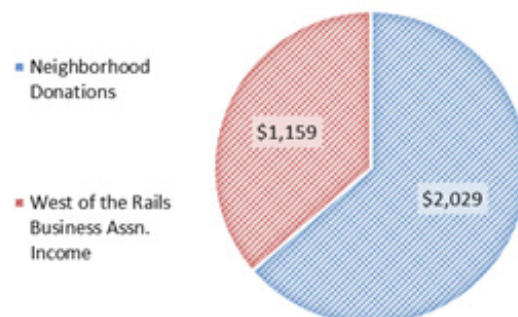
Report of Financial Position Fiscal Year 2018

	Dec. 31, 2018		Jan - Dec 2018
ASSETS		Income	
Current Assets		Government Grants	
Checking	55,681	City of Minneapolis - CPP	77,320
Contracts/Accts Receivable	10,957	City of Minneapolis - NRP	74,105
Prepaid Expenses	1,776	City of Minneapolis - Great Streets	46,687
Security Deposit	1,000	Hennepin County - Green Partners	10,000
Total Current Assets	69,414	Minnesota State Arts Board	3,546
LIABILITIES & NET ASSETS		Total Government Grants	211,658
Liabilities		Neighborhood Donations	2,029
Current Liabilities		West of the Rails Business Assn. Income	1,159
Accounts Payable	1,036	Total Income	214,846
Payroll Liabilities	2,575	Expenses	
Accrued Payroll	1,660	Personnel: Salary/Benefits/Payroll Taxes	104,623
Total Current Liabilities	5,271	General and Administrative Expenses	35,847
Contract Advances	38,786	WRBA Expenses	2,619
Total Liabilities	44,057	Community Program Expenses	
Net Assets		Community Events	7,811
Unrestricted Net Assets	25,896	Communications	6,501
Total Net Assets	25,896	Community Grants	4,972
TOTAL LIABILITIES & NET ASSETS	69,953	Programs	56,108
		Total Community Program Expenses	75,392
		Total Expense	218,481
		Net Income	(3,635)

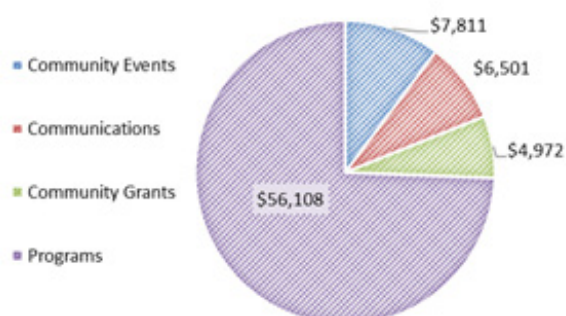
GOVERNMENT GRANTS



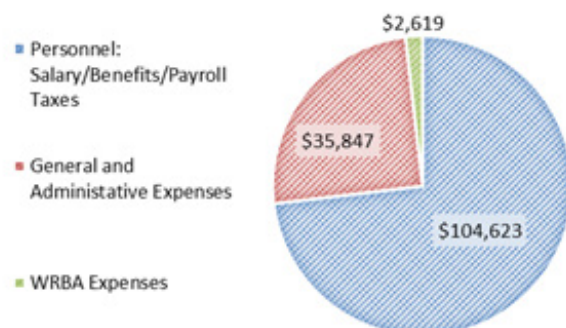
OTHER REVENUE



PROGRAM EXPENSE



OPERATIONS EXPENSE



Report of Financial Position Fiscal Year 2017

	Dec. 31, 2017
ASSETS	
Current Assets	
Checking	33,364
Contracts/Accts Receivable	7,530
Prepaid Expenses	471
Total Current Assets	41,365
Equipment & Leaseholder Improvements	
Equipment/Improvement Cost	11,525
Accumulated Depreciation	(235)
Total Equipment & Improvement Costs	11,290.00
Other Asset - Security Deposit	1,000.00
TOTAL ASSETS	53,655

LIABILITIES & NET ASSETS

Liabilities	
Current Liabilities	
Accounts Payable	2,243
Payroll Liabilities	2,600
Accrued Payroll	3,319
Total Current Liabilities	8,162
Contract Advances	4,712
Total Liabilities	12,874
Net Assets	
Unrestricted Net Assets	40,781
Total Net Assets	40,781
TOTAL LIABILITIES & NET ASSETS	53,655

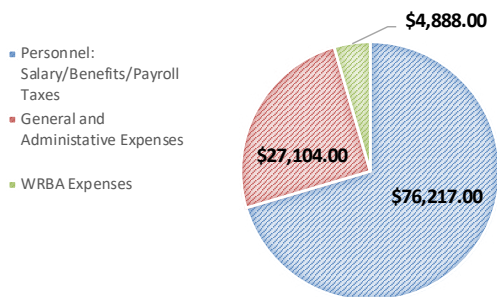
Income

	Jan - Dec 2017
Government Grants	
City of Minneapolis - CPP	\$ 77,320.00
City of Minneapolis - NRP	\$ 40,570.00
City of Minneapolis - Great Streets	\$ 8,246.00
Hennepin County - Green Partners	\$ 297.00
Total Government Grants	\$ 126,433.00
Neighborhood Donations	\$ 1,223.00
WRBA Membership Dues	\$ 1,245.00
TOTAL INCOME	\$ 128,901.00

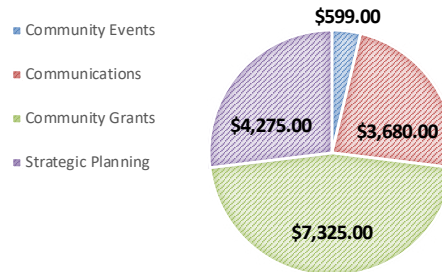
Expense

Personnel: Salary/Benefits/Payroll Taxes	\$ 76,217.00
General and Administrative Expenses	\$ 27,104.00
WRBA Expenses	\$ 4,888.00
Community Program Expenses	
Community Events	\$ 599.00
Communications	\$ 3,680.00
Community Grants	\$ 7,325.00
Strategic Planning	\$ 4,275.00
Total Community Program Expenses	\$ 15,879.00
TOTAL EXPENSES	\$ 124,088.00
NET REVENUE	\$ 4,813.00

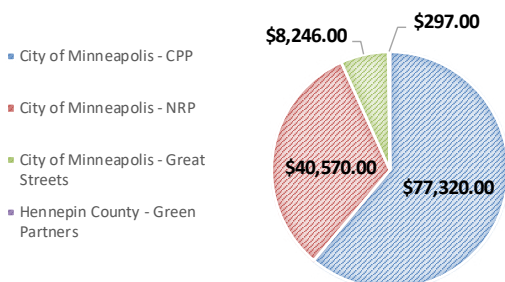
OPERATING EXPENSES



COMMUNITY PROGRAM EXPENSE



GOVERNMENT GRANTS



OTHER INCOME

